

Digitally signed by
Lyndon F Schmidt
Date: 2025.07.02
15:09:22 -04'00'

This item has been digitally signed and sealed by
L. F. Schmidt, P.E. on the date adjacent to the seal.
Printed copies of this document are not
considered signed and sealed and the signature
must be verified on any electronic copies.

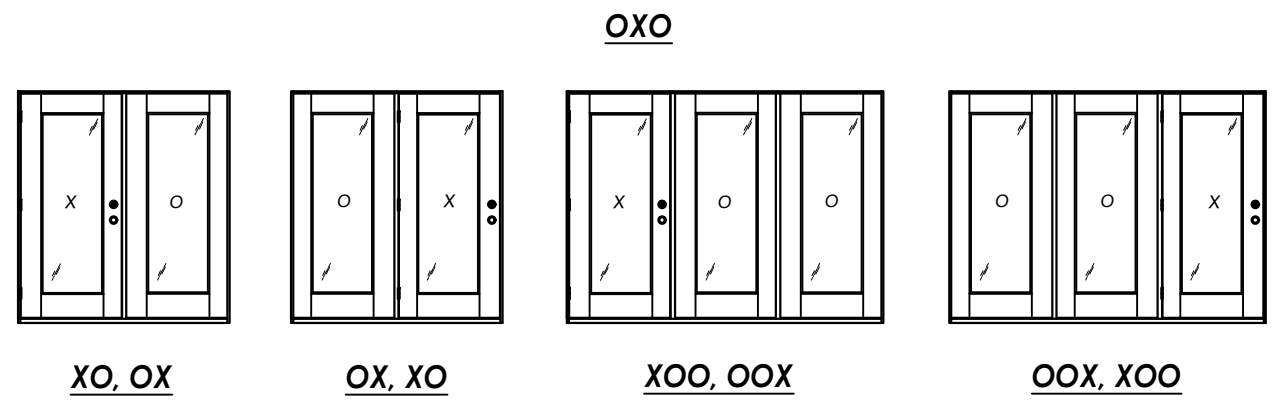
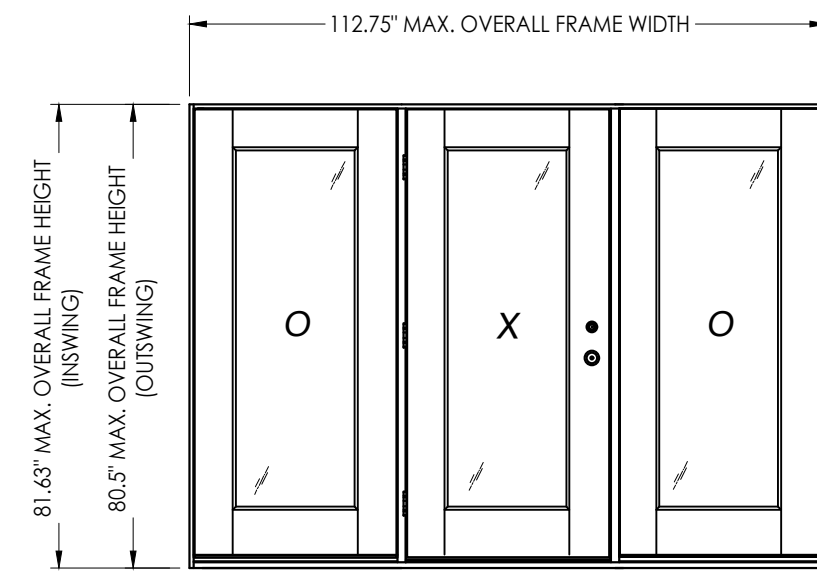
THIS PRODUCT APPROVAL IS VALID
ONLY FOR THE STATE OF FLORIDA

Documents Prepared By:
Lyndon F. Schmidt
P.E. No. 43409

RW BUILDING CONSULTANTS, INC.
P.O. Box 230, Valrico, FL 33595
Phone No.: 813.659.9197
FBPE Registry No. 9813

"Direct Glaze" Fiberglass Door Single w/ Sidelite(s)

INSWING/OUTSWING "IMPACT"



CONTINUOUS HEAD & SILL

CONFIGURATION	MAX. FRAME DIMENSION	JAMB & MULLION MATERIAL	DESIGN PRESSURE (PSF) INSWING		DESIGN PRESSURE (PSF) OUTSWING	
			POSITIVE	NEGATIVE	POSITIVE	NEGATIVE
OX, XO	74.75" x 81.63"	WOOD	+45.0	-50.0	+40.0	-40.0
OXO, XOO, OOX	111.5" x 81.63"		+45.0	-50.0	+40.0	-40.0
OX, XO	75.25" x 81.63"	PVC	+50.0	-50.0	+50.0	-50.0
OXO, XOO, OOX	112.75" x 81.63"		+50.0	-50.0	+50.0	-50.0

GENERAL NOTES

1. This product has been evaluated and is in compliance with the 8th Edition (2023) Florida Building Code (FBC) structural requirements excluding the "High Velocity Hurricane Zone" (HVHZ).
2. Product anchors shall be as listed and spaced as shown on details. Anchor embedment to base material shall be beyond wall dressing or stucco.
3. When used in areas requiring wind borne debris protection, this product complies with FBC Sections 1609.1.2 & R301.2.1.2 and does not require an impact resistant covering. This product meets missile level "D" and excludes Wind Zone 4 as defined in ASTM E 1996 and FBC Sections 1609.1.2.2 & R301.2.1.2.1.
4. For 2x stud framing construction, anchoring of these units shall be the same as that shown for 2x buck masonry construction.
5. Site conditions that deviate from the details of this drawing require further engineering analysis by a licensed engineer or registered architect.

TABLE OF CONTENTS

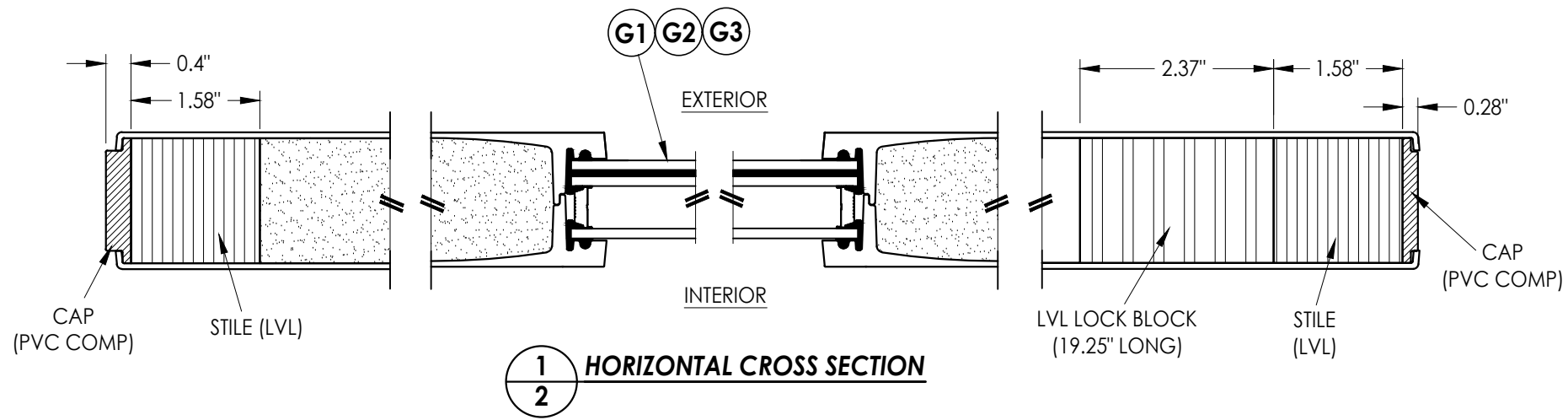
SHEET #	DESCRIPTION	SHEET #	
1	Typical Elevations, Design Pressures & General Notes	7	Horizontal & Vertical Cross Sections (1X Buck)
2	Door Panel Details	8	Horizontal & Vertical Cross Sections (Direct to Masonry)
3	Sidelite Panel & Flush Glazing Details	9	Vertical Cross Sections (Thresholds)
4	Elevations	10	Buck Anchoring
5	Horizontal Cross Sections	11	Frame Anchoring & Hardware Details
6	Horizontal & Vertical Cross Sections (2X Buck)	12	Bill of Materials & Components

PRODUCT: TRINITY
FIBERGLASS PATIO DOOR

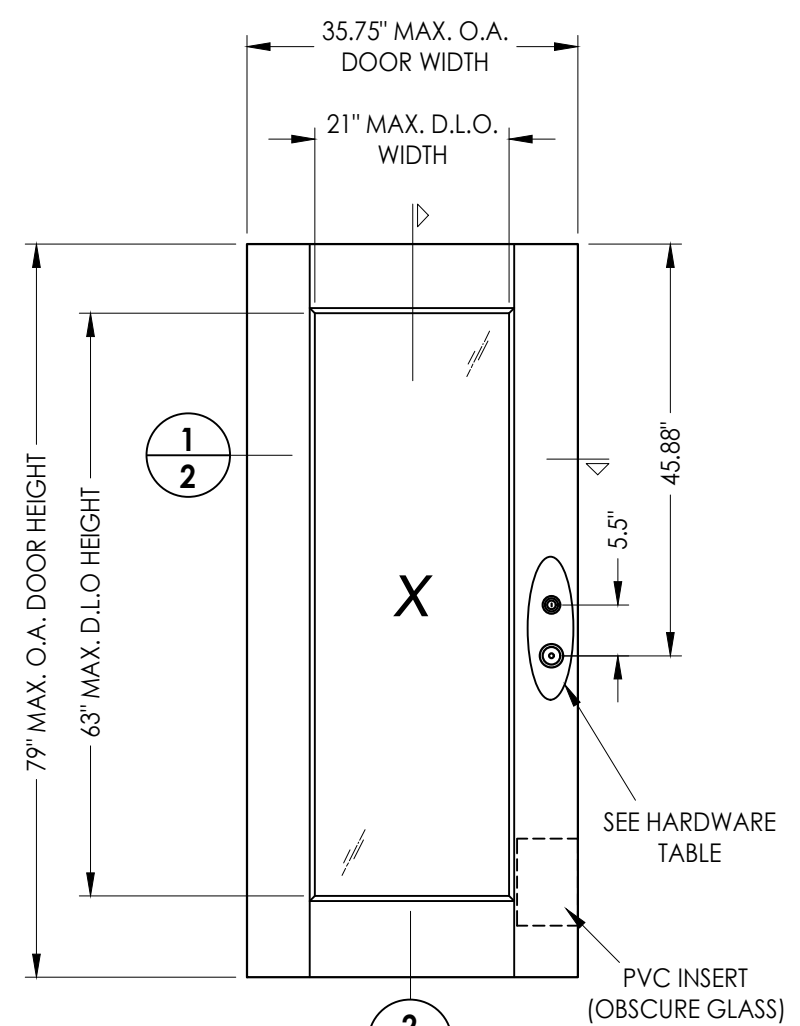
PART OR ASSEMBLY:
TYPICAL ELEVATION, DESIGN
PRESSURES & GENERAL NOTES

NO.	DATE	REVISIONS
1	6/20/25	ADD GLAZING DETAIL G3

DATE: 1/30/25
SCALE: N.T.S.
DWG. BY: RW
CHK. BY: LFS
DRAWING NO.: FL-47284.7
SHEET 1 of 12

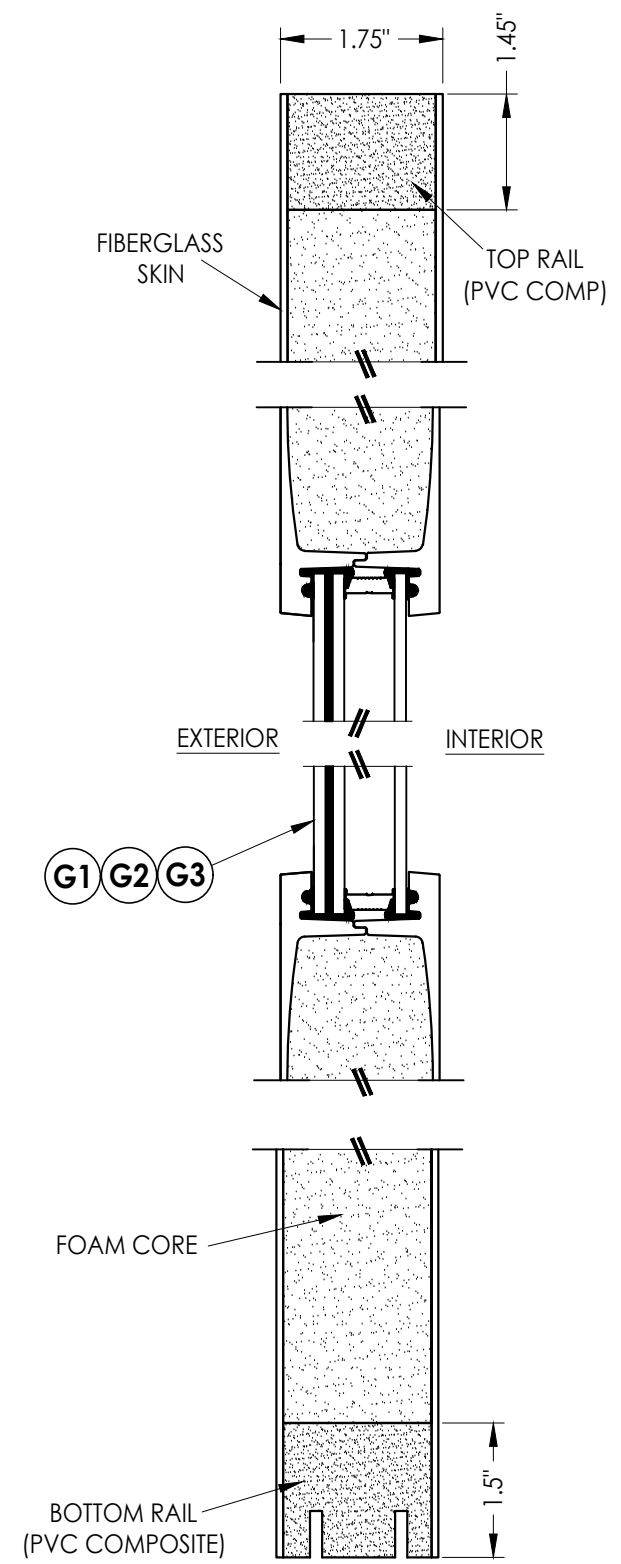


1
2 HORIZONTAL CROSS SECTION



40 FIBERGLASS DOOR PANEL

HARDWARE CHART	
MANUFACTURER	MODEL
KWIKSET	KNOB: SIGNATURE SERIES
	DEADBOLT: SIGNATURE SERIES (980)
SCHLAGE	KNOB: F SERIES
	DEADBOLT: B60 SERIES



2
2 VERTICAL CROSS SECTION

FIBERGLASS DOOR SKIN: MIN. 0.071" THK.
FOAM CORE MATERIAL: POLYURETHANE

Documents Prepared By:
Lyndon F. Schmidt
P.E. No. 43409

RW BUILDING CONSULTANTS, INC.
P.O. Box 230, Valrico, FL 33595
Phone No.: 813.659.9197
FBPE Registry No. 9813

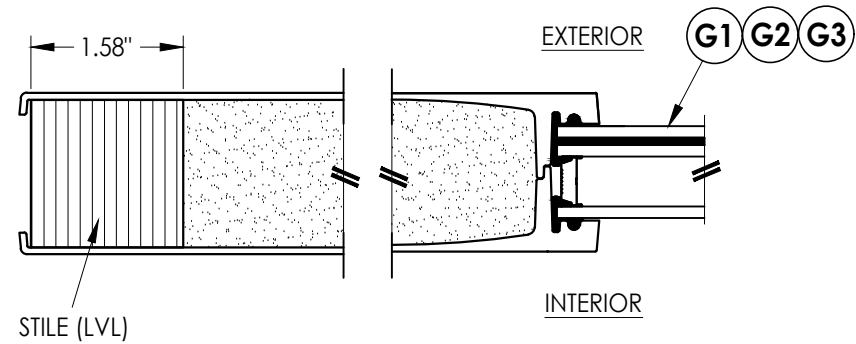
PRODUCT: TRINITY
FIBERGLASS PATIO DOOR

PART OR ASSEMBLY:
DOOR
PANEL DETAILS

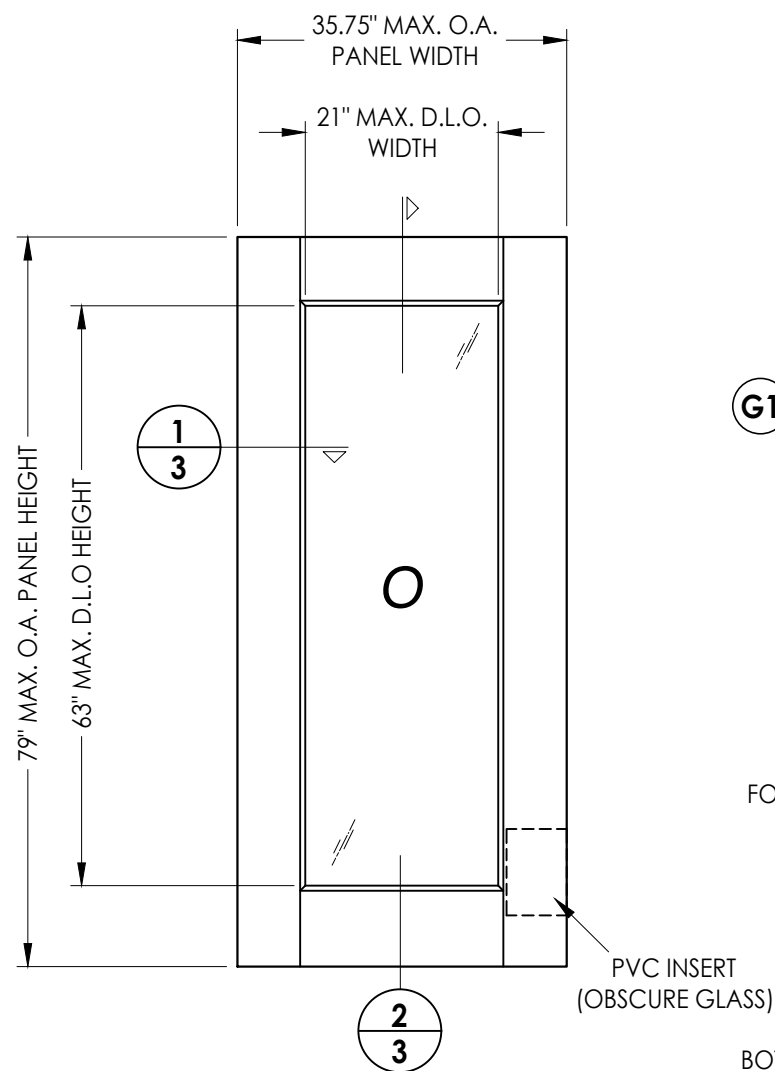
NO.	DATE	REVISIONS
1	6/20/25	ADD GLAZING DETAIL G3
LFS		BY

DATE: 1/30/25
SCALE: N.T.S.
DWG. BY: RW
CHK. BY: LFS
DRAWING NO.: FL-47284.7
SHEET 2 OF 12

Z:\2023 FBC Drawings\Trinity Glass Int\FL-47284 R\FL-47284.7.dwg

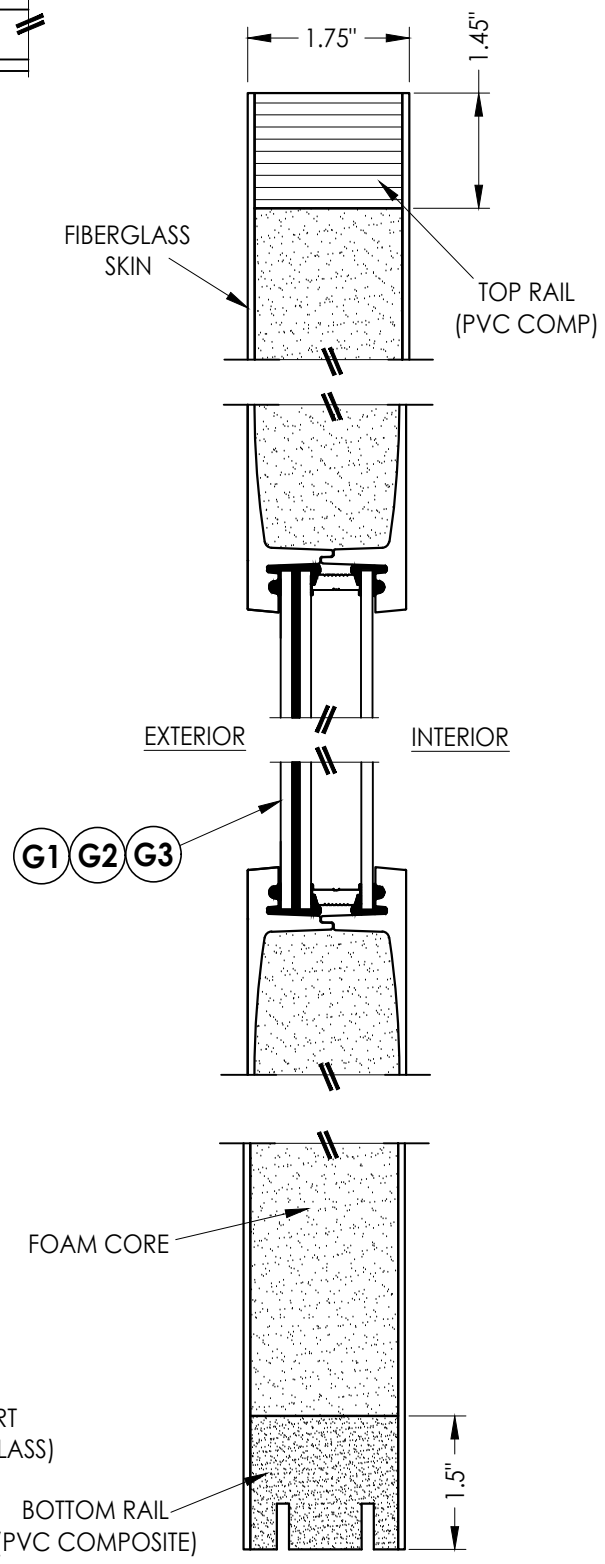


1
3 **HORIZONTAL CROSS SECTION**

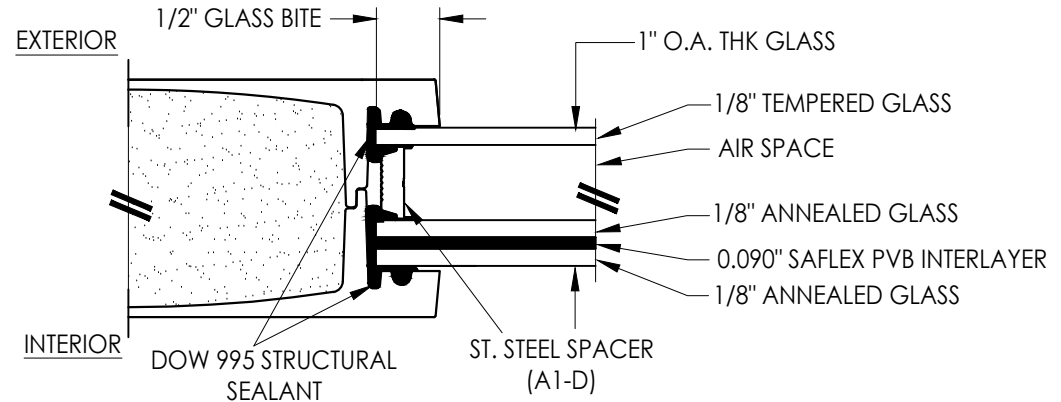


50 **FIBERGLASS SIDELITE PANEL**

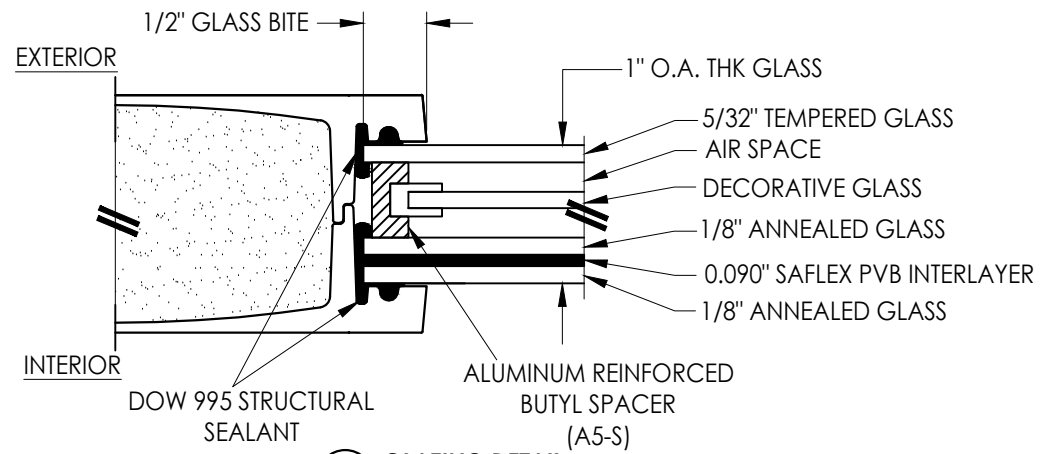
FIBERGLASS DOOR SKIN: MIN. 0.071" THK.
FOAM CORE MATERIAL: POLYURETHANE



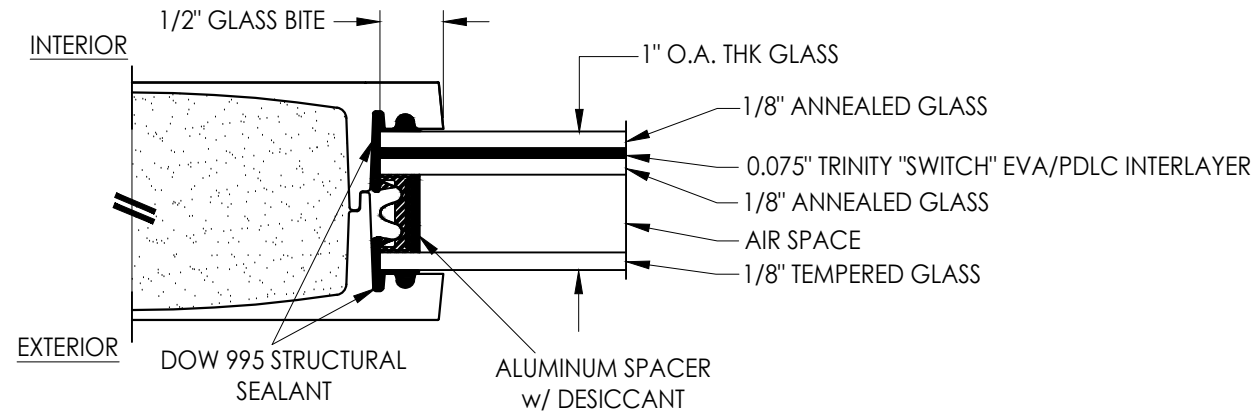
2
3 **VERTICAL CROSS SECTION**



G1 **GLAZING DETAIL**
CLEAR GLASS



G2 **GLAZING DETAIL**
DECORATIVE GLASS



G3 **GLAZING DETAIL**
CLEAR OR OPAQUE PDLC GLASS

Documents Prepared By:
Lyndon F. Schmidt
P.E. No. 43409

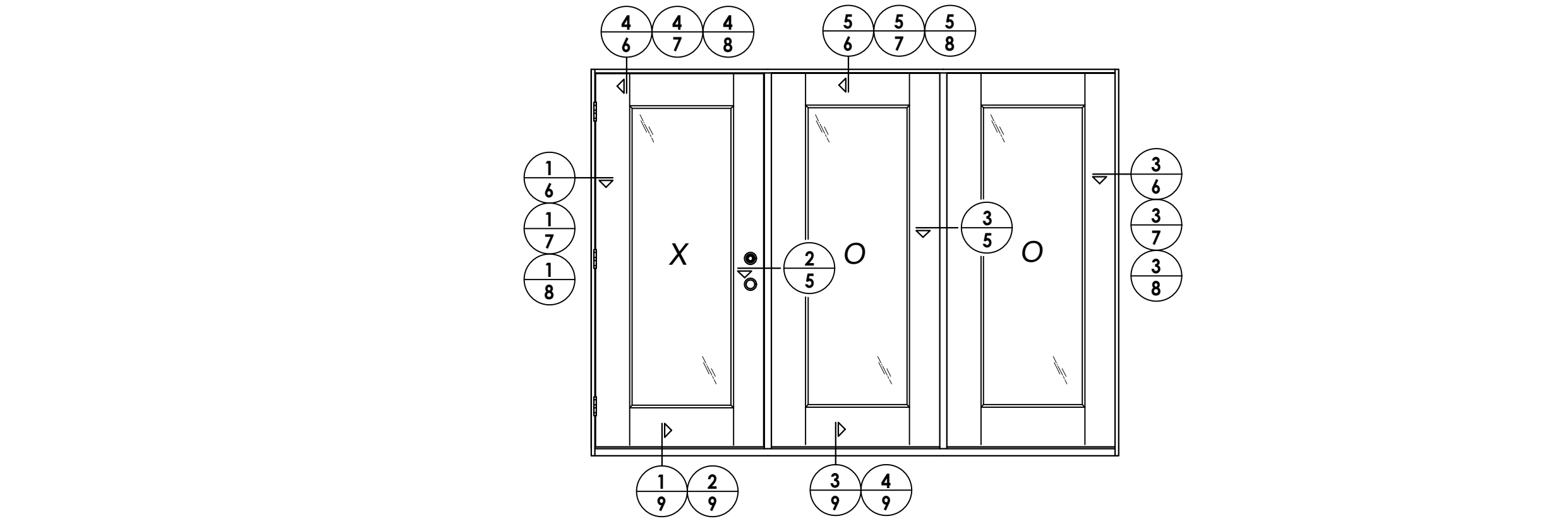
RW BUILDING CONSULTANTS, INC.
P.O. Box 230, Valrico, FL 33595
Phone No.: 813.659.9197
FBPE Registry No. 9813

PRODUCT: TRINITY
FIBERGLASS PATIO DOOR
PART OR ASSEMBLY:
SIDELITE PANEL &
FLUSH GLAZING DETAILS

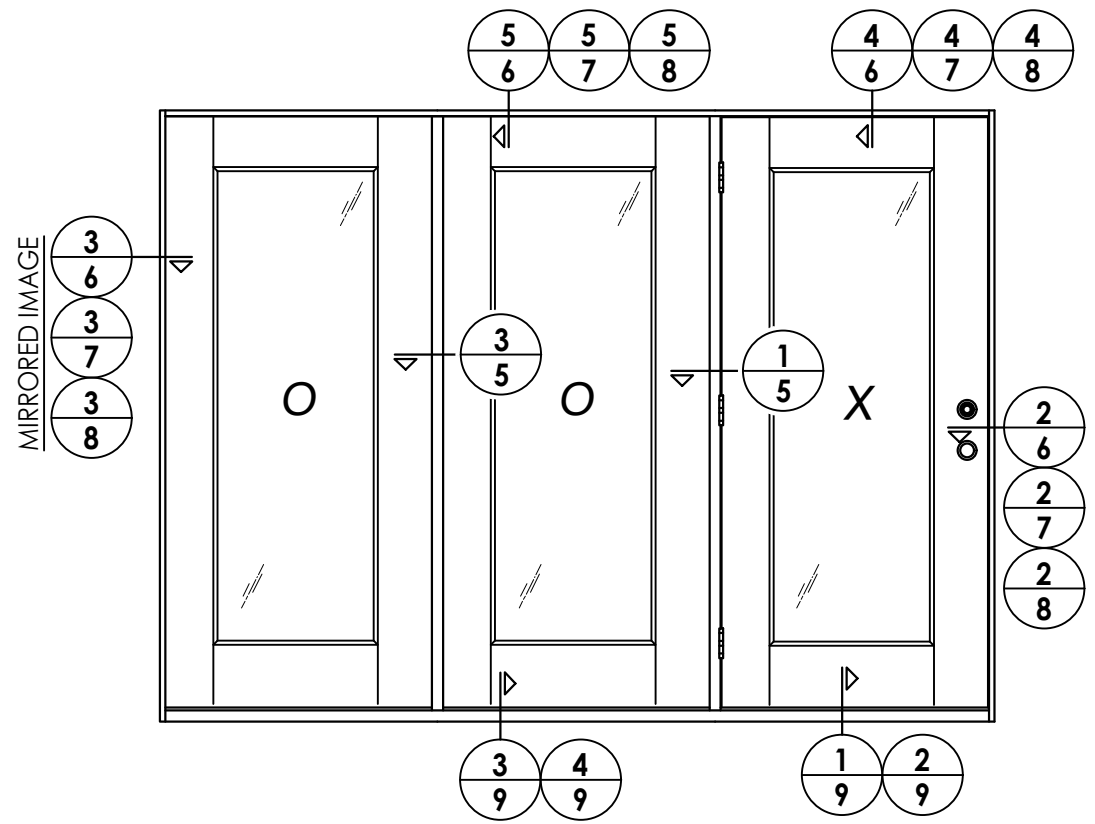
NO.	DATE	ADD GLAZING DETAIL G3	BY
1	6/20/25		LFS

DATE: 1/30/25
SCALE: N.T.S.
DWG. BY: RW
CHK. BY: LFS
DRAWING NO.: FL-47284.7
SHEET 3 OF 12

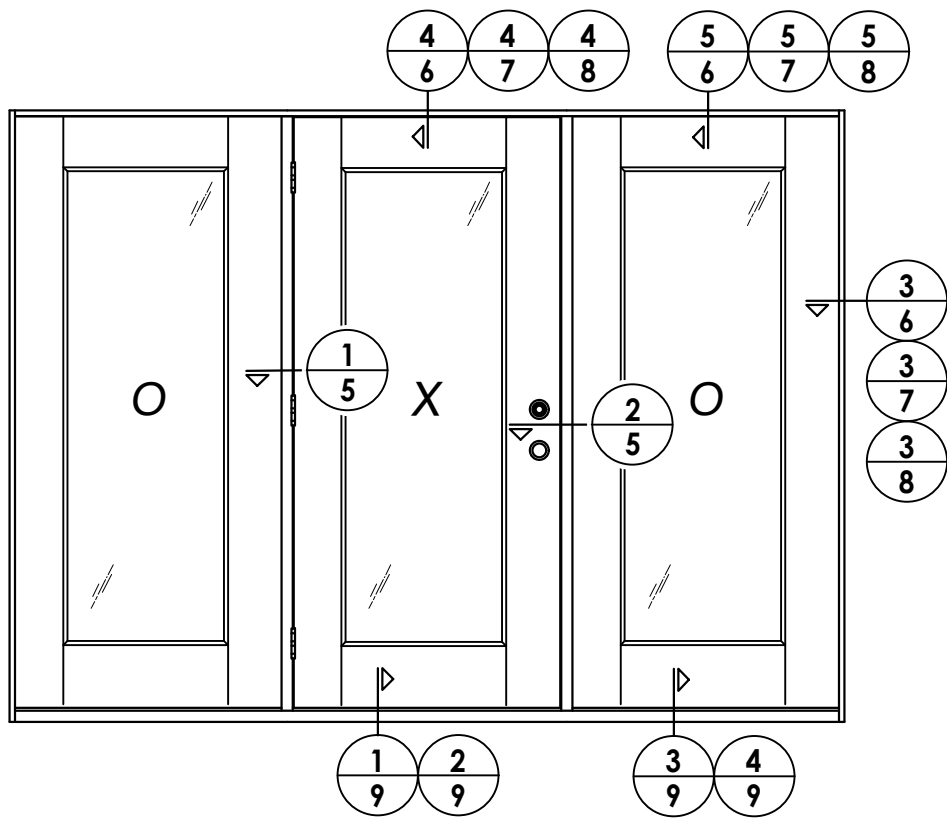
© 2025 R.W. BUILDING CONSULTANTS INC.



ELEVATION
XOO / OOX (SHOWN)
XO / OX (SIMILAR)



ELEVATION
OOX / XOO (SHOWN)
OX / XO (SIMILAR)
(CENTER HINGED)



ELEVATION
OXO

Documents Prepared By:
Lyndon F. Schmidt
P.E. No. 43409

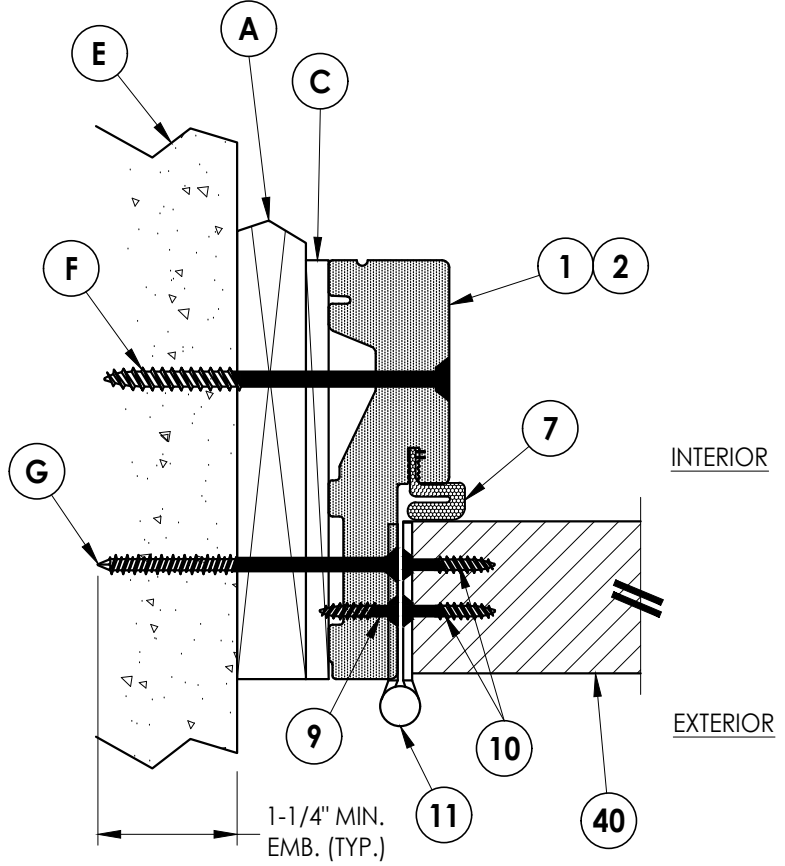
RW BUILDING CONSULTANTS, INC.
P.O. Box 230, Valrico, FL 33595
Phone No.: 813.659.9197
FBPE Registry No. 9813

PRODUCT: TRINITY
FIBERGLASS PATIO DOOR

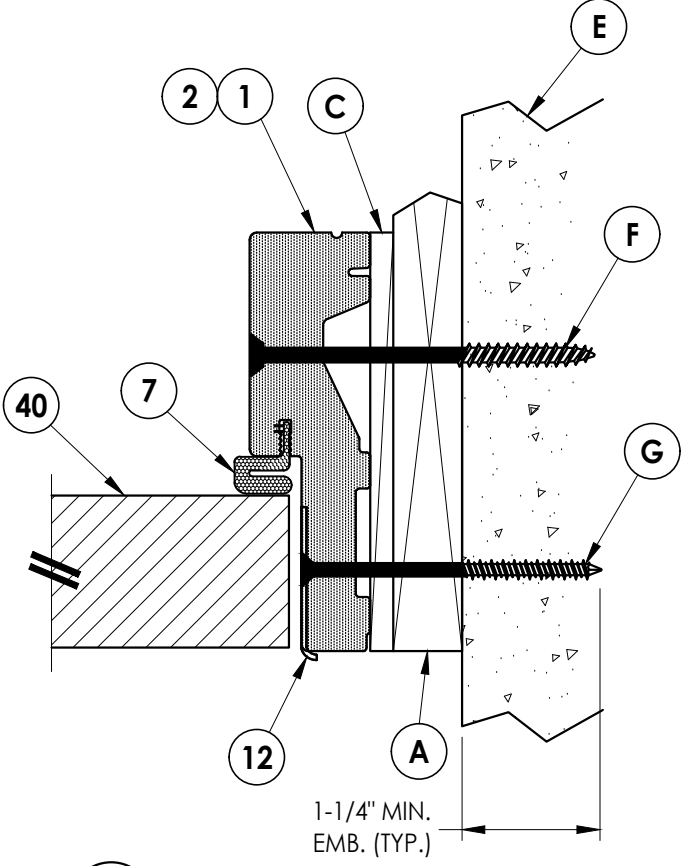
PART OR ASSEMBLY:
ELEVATIONS

NO.	DATE	REVISIONS	LFS	BY
1	6/20/25	ADD GLAZING DETAIL G3		

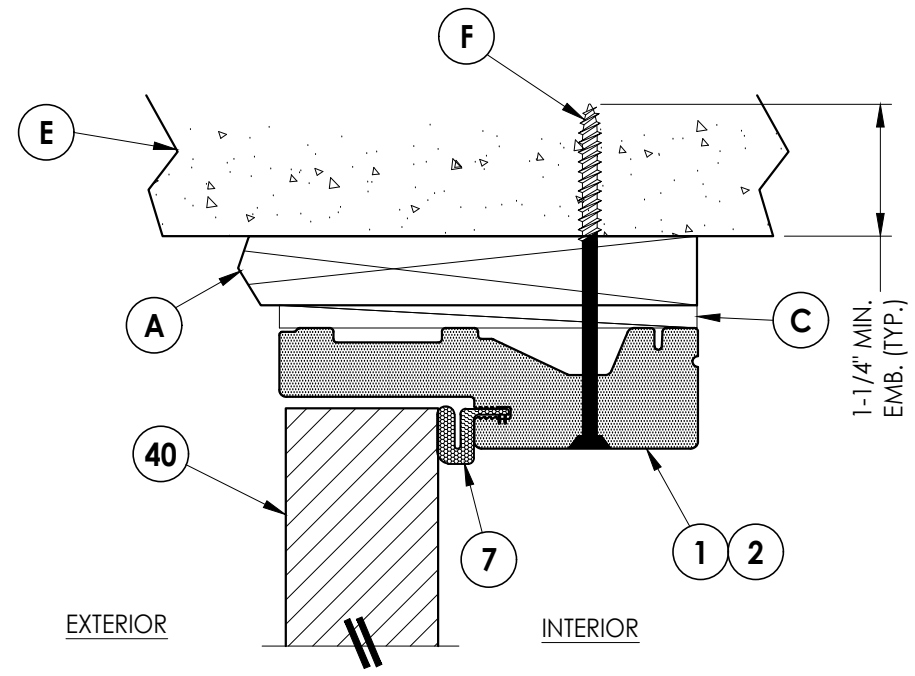
DATE: 1/30/25
SCALE: N.T.S.
DWG. BY: RW
CHK. BY: LFS
DRAWING NO.: FL-47284.7
SHEET 4 OF 12



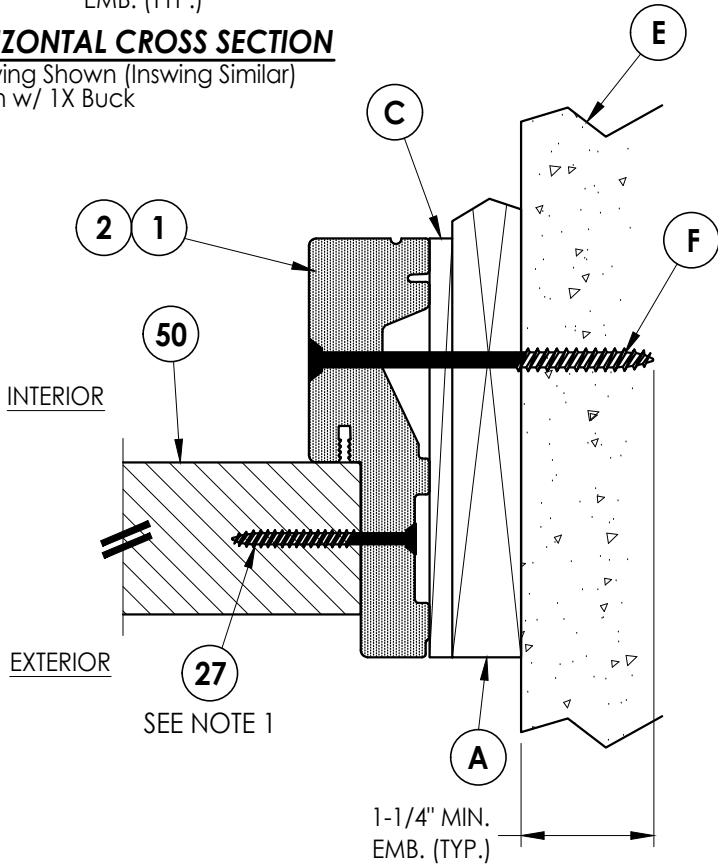
1 **HORIZONTAL CROSS SECTION**
7 Outswing Shown (Inswing Similar)
 Shown w/ 1X Buck



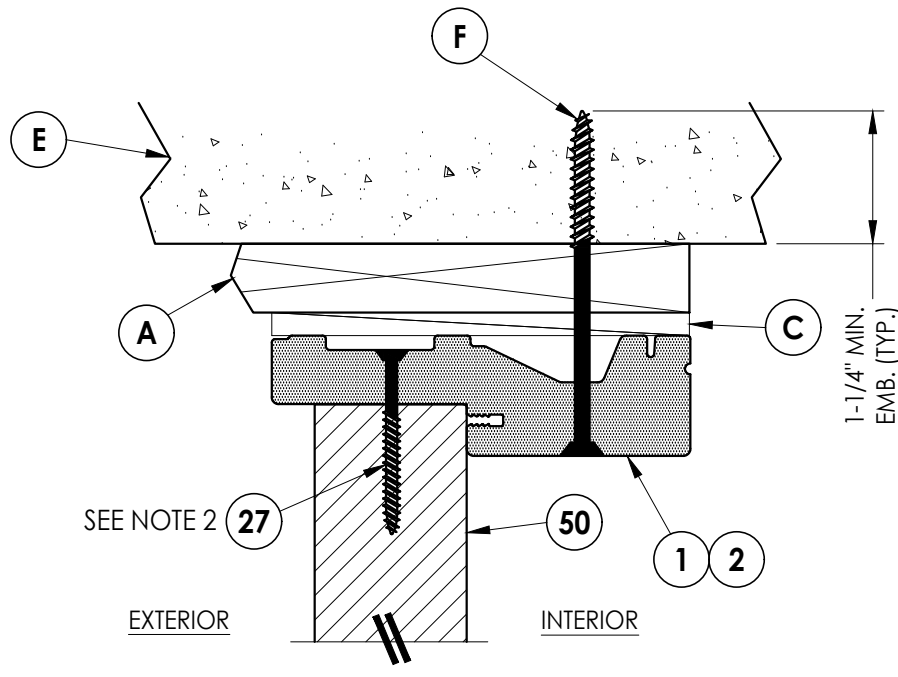
2 **HORIZONTAL CROSS SECTION**
7 Outswing Shown (Inswing Similar)
 Shown w/ 1X Buck



4 **VERTICAL CROSS SECTION**
7 Outswing Shown (Inswing Similar)
 Shown w/ 1X Buck



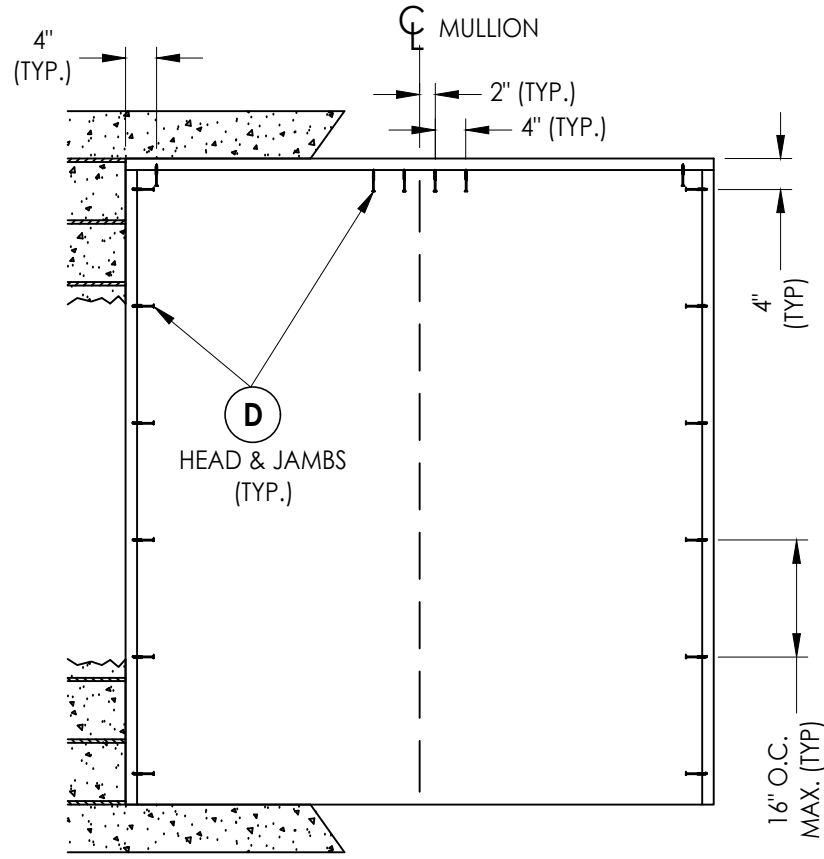
3 **HORIZONTAL CROSS SECTION**
7 Outswing Shown (Inswing Similar)
 Shown w/ 1X Buck



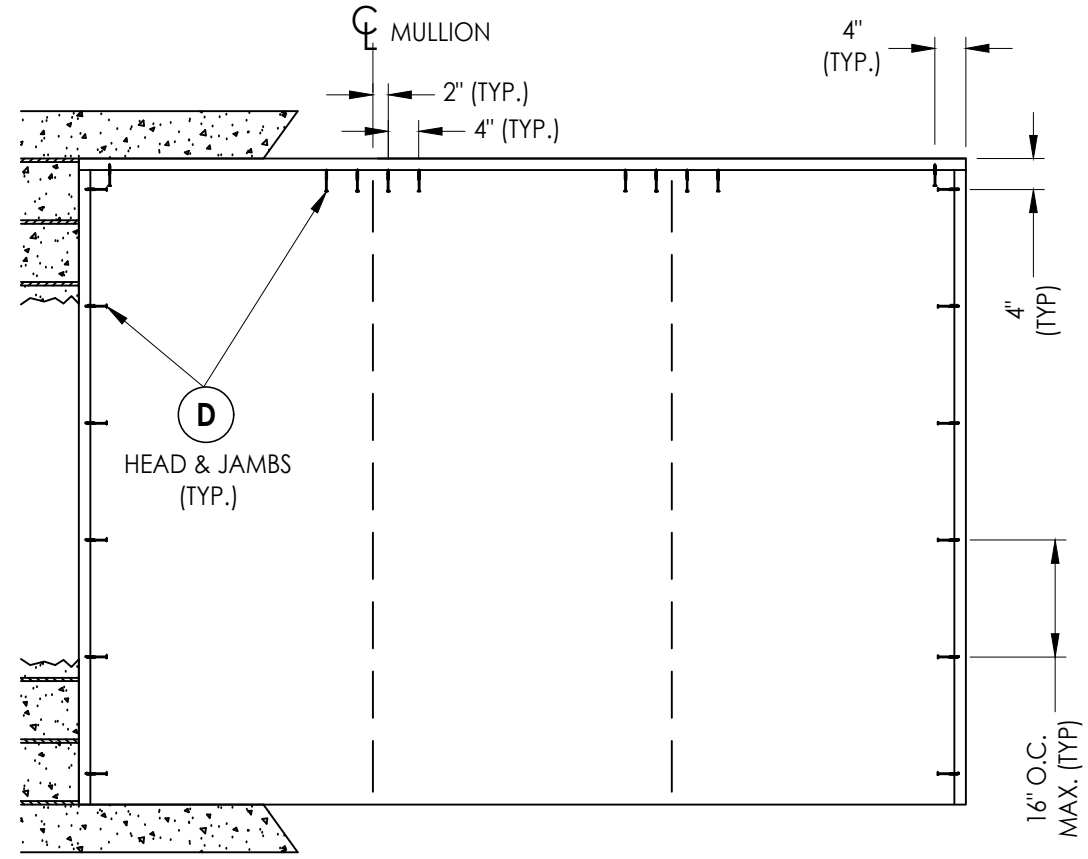
5 **VERTICAL CROSS SECTION**
7 Outswing Shown (Inswing Similar)
 Shown w/ 1X Buck

Notes:
 1. Sidelite assembly screws located 6" from each end and 4 more screws equally spaced between (6 screws total per side jamb).
 2. Sidelite assembly screws located 10" from each end (2 screws total along head & sill).

Documents Prepared By: Lyndon F. Schmidt P.E. No. 43409		BUILDING CONSULTANTS, INC. P.O. Box 230, Valrico, FL 33595 Phone No.: 813.659.9197 FBPE Registry No. 9813	
PRODUCT:	TRINITY FIBERGLASS PATIO DOOR	PART OR ASSEMBLY:	HORIZONTAL & VERTICAL CROSS SECTIONS (1X BUCK)
NO.	DATE	LFS	BY
1	6/20/25	ADD GLAZING DETAIL G3	
DATE: 1/30/25		REVISIONS	
SCALE: N.T.S.			
DWG. BY: RW			
CHK. BY: LFS			
DRAWING NO.: FL-47284.7			
SHEET 7 OF 12			



XO, OX



OXO, OOX, XOO

2X BUCK ANCHORING

DATE:	1/30/25
SCALE:	N.T.S.
DWG. BY:	RW
CHK. BY:	LFS
DRAWING NO.:	FL-47284.7
SHEET	10 OF 12

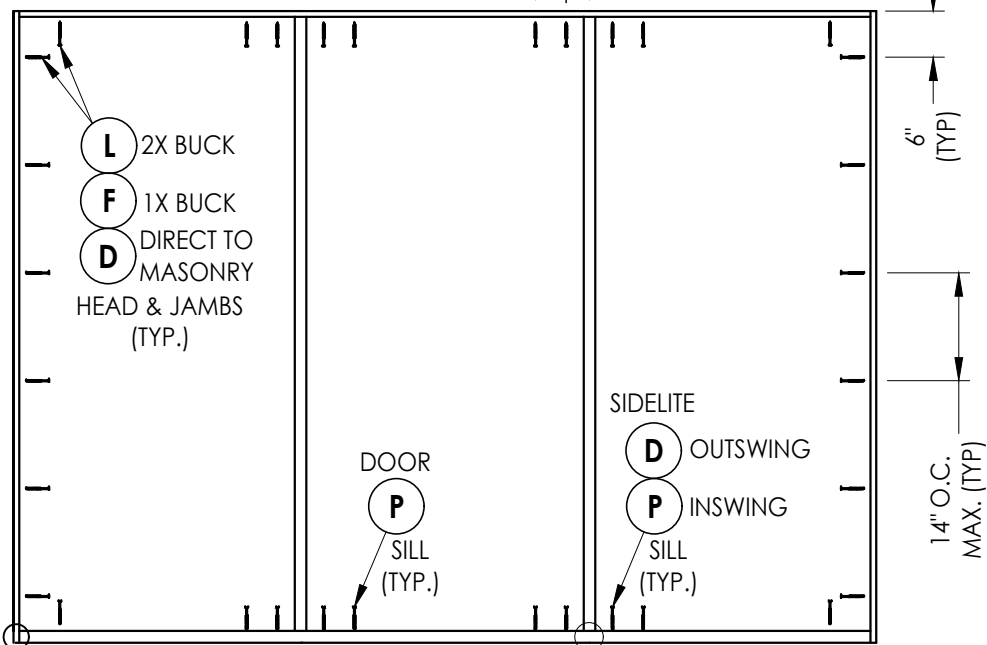
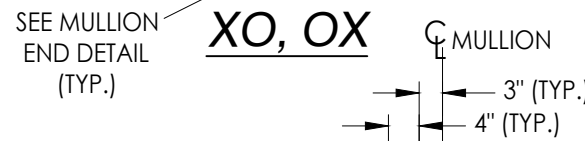
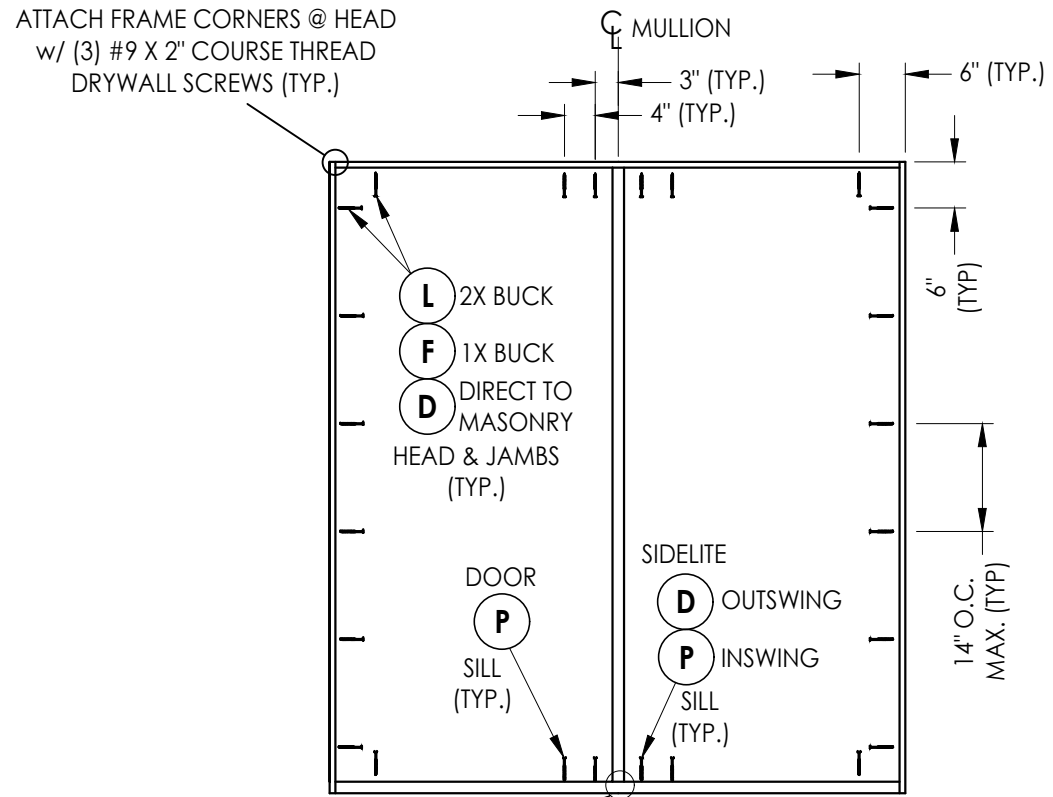
NO.	DATE	REVISIONS
1	6/20/25	ADD GLAZING DETAIL G3
		LFS
		BY

PRODUCT:	TRINITY FIBERGLASS PATIO DOOR
PART OR ASSEMBLY:	BUCK ANCHORING

Documents Prepared By:
Lyndon F. Schmidt
P.E. No. 43409

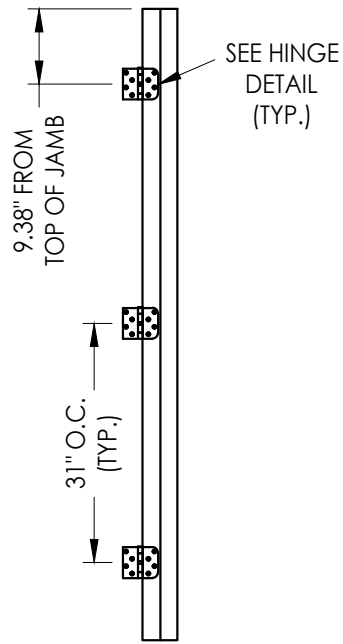


BUILDING CONSULTANTS, INC.
P.O. Box 230, Vairico, FL 33595
Phone No.: 813.659.9197
FBPE Registry No. 9813

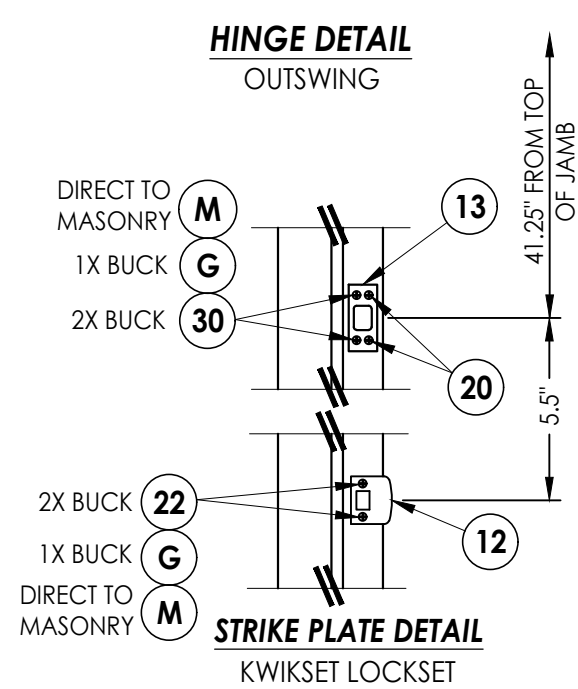
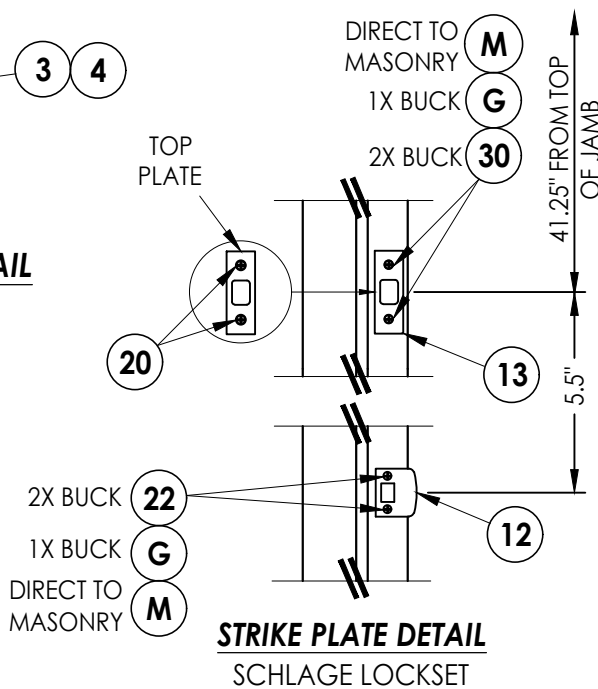
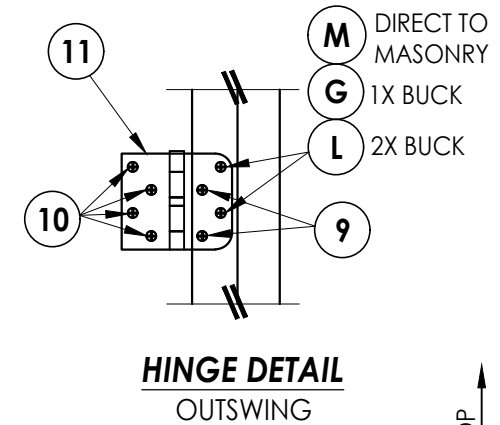
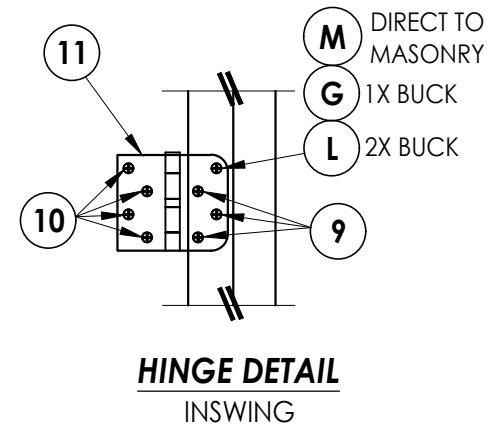
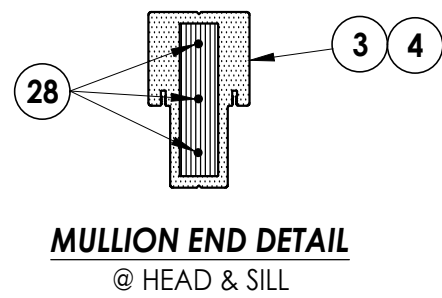


OXO, OOX, XOO

FRAME ANCHORING



HINGE JAMB



HARDWARE DETAILS

Documents Prepared By:
Lyndon F. Schmidt
P.E. No. 43409

RW BUILDING CONSULTANTS, INC.
P.O. Box 230, Vairico, FL 33595
Phone No.: 813.659.9197
FBPE Registry No. 9813

PRODUCT: TRINITY
FIBERGLASS PATIO DOOR

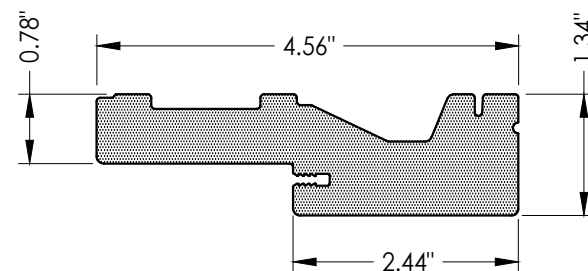
PART OR ASSEMBLY:
FRAME ANCHORING
& HARDWARE DETAILS

NO.	DATE	REVISIONS	BY
1	6/20/25	ADD GLAZING DETAIL G3	LFS

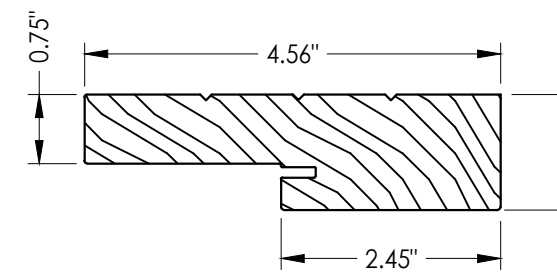
DATE: 1/30/25
SCALE: N.T.S.
DWG. BY: RW
CHK. BY: LFS
DRAWING NO.: FL-47284.7
SHEET 11 OF 12

BILL OF MATERIALS

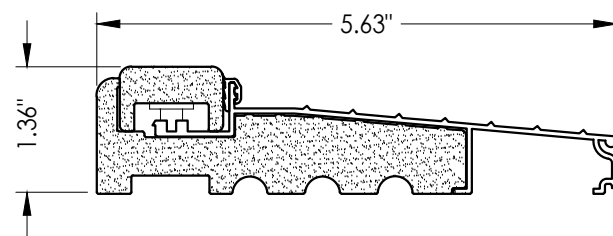
ITEM #	DESCRIPTION	MATERIAL
A	1X BUCK (G >= 0.42)	WOOD
B	2X BUCK (G >= 0.42)	WOOD
C	1/4" MAX. SHIM SPACE	-
D	1/4" X 2-3/4" PFH DeWALT OR ITW CONCRETE SCREW	STEEL
E	MASONRY - 3,000 PSI MIN. CONCRETE CONFORMING TO ACI 301 OR HOLLOW BLOCK CONFORMING TO ASTM C90	CONCRETE
F	1/4" X 3-3/4" PFH DeWALT OR ITW CONCRETE SCREW	STEEL
G	3/16" X 3-1/4" PFH ITW CONCRETE SCREW	STEEL
L	#10 X 2-1/2" PFH WOOD SCREW (1.15" MIN. EMB.)	STEEL
M	3/16" X 2-1/4" PFH ITW CONCRETE SCREW	STEEL
P	1/4" X 2-1/4" PFH DeWALT OR ITW CONCRETE SCREW	STEEL
1	PVC JAMB	PVC
2	WOOD JAMB	WOOD
3	PVC MULLION (w/ LVL INSERT)	PVC/LVL
4	WOOD MULLION	WOOD
7	WEATHERSTRIP	FOAM
8	DOOR SWEEP	VINYL
9	#9 X 3/4" PFH WOOD SCREW	STEEL
10	#9 X 1" PFH WOOD SCREW	STEEL
11	4" X 4" HINGE	STEEL
12	LATCH STRIKE PLATE	STEEL
13	DEADBOLT STRIKE PLATE	STEEL
14	INSWING THRESHOLD	ALUM/COMP
15	OUTSWING THRESHOLD	ALUM/COMP
16	INSWING SIDELITE ADAPTER	PVC
20	#8 X 1/2" PFH WOOD SCREW	STEEL
22	#8 X 2-1/2" PFH WOOD SCREW	STEEL
27	#10 X 2" PFH SMS	STEEL
28	#10 X 3" PFH WOOD SCREW	STEEL
30	#12 X 2-1/2" PFH WOOD SCREW	STEEL
40	DOOR PANEL	-
50	SIDELITE PANEL	-



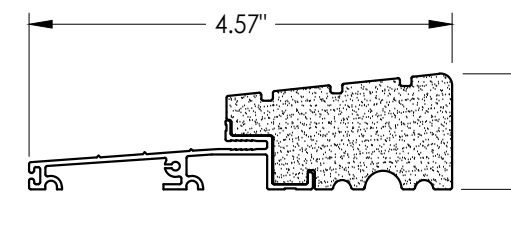
1 PVC JAMB



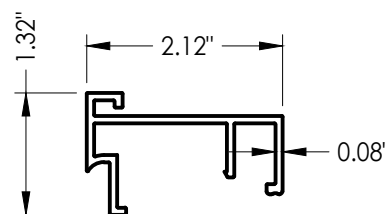
2 WOOD JAMB
FINGER JOINTED PINE



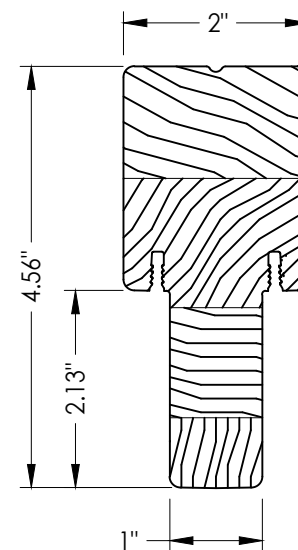
14 INSWING THRESHOLD



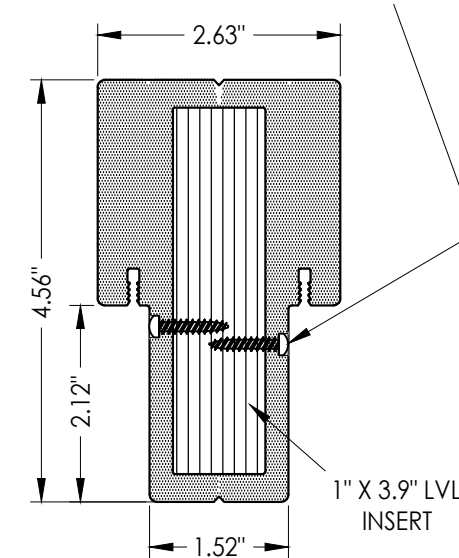
15 OUTSWING THRESHOLD



16 INSWING SIDELITE ADAPTER



4 INTEGRAL MULLION
PINE



3 PVC MULLION

CONCRETE ANCHOR NOTES:

- Concrete anchor locations at the corners may be adjusted to maintain the min. edge distance to mortar joints.
- Concrete anchor locations noted as "MAX. ON CENTER" must be adjusted to maintain the min. edge distance to mortar joints, additional concrete anchors may be required to ensure the "MAX. ON CENTER" dimension are not exceeded.
- Concrete anchor table:

ANCHOR TYPE	ANCHOR SIZE	MIN. EMBEDMENT	MIN. CLEARANCE TO MASONRY EDGE	MIN. CLEARANCE TO ADJACENT ANCHOR
ITW BUILDEX TAPCON®	3/16"	1-1/4"	3"	1-1/2"
	1/4"	1-1/4"	2"	4"
DeWALT ULTRACON®	1/4"	1-1/4"	1"	4"

WOOD SCREW INSTALLATION NOTES:

- Maintain a minimum 5/8" edge distance, 1" end distance, & 1" o.c. spacing of wood screws to prevent the splitting of wood.

Documents Prepared By:
Lyndon F. Schmidt
P.E. No. 43409

RW BUILDING CONSULTANTS, INC.
P.O. Box 230, Vairico, FL 33595
Phone No.: 813.659.9197
FBPE Registry No. 98113

PRODUCT: TRINITY
FIBERGLASS PATIO DOOR

PART OR ASSEMBLY:
BILL OF MATERIALS
& COMPONENTS

NO.	DATE	DESCRIPTION	BY
1	6/20/25	ADD GLAZING DETAIL G3	LFS

REVISIONS

DATE: 1/30/25

SCALE: N.T.S.

DWG. BY: RW

CHK. BY: LFS

DRAWING NO.: FL-47284.7

SHEET 12 OF 12